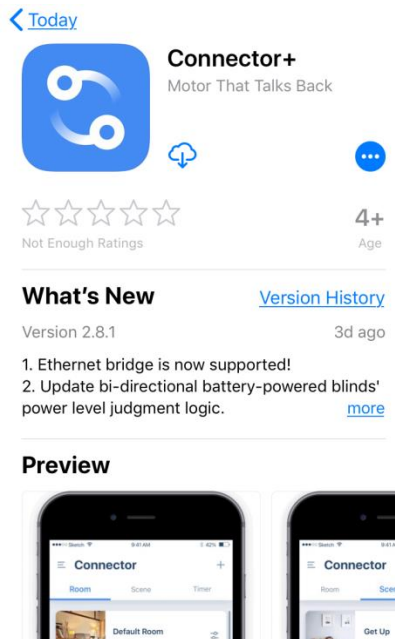
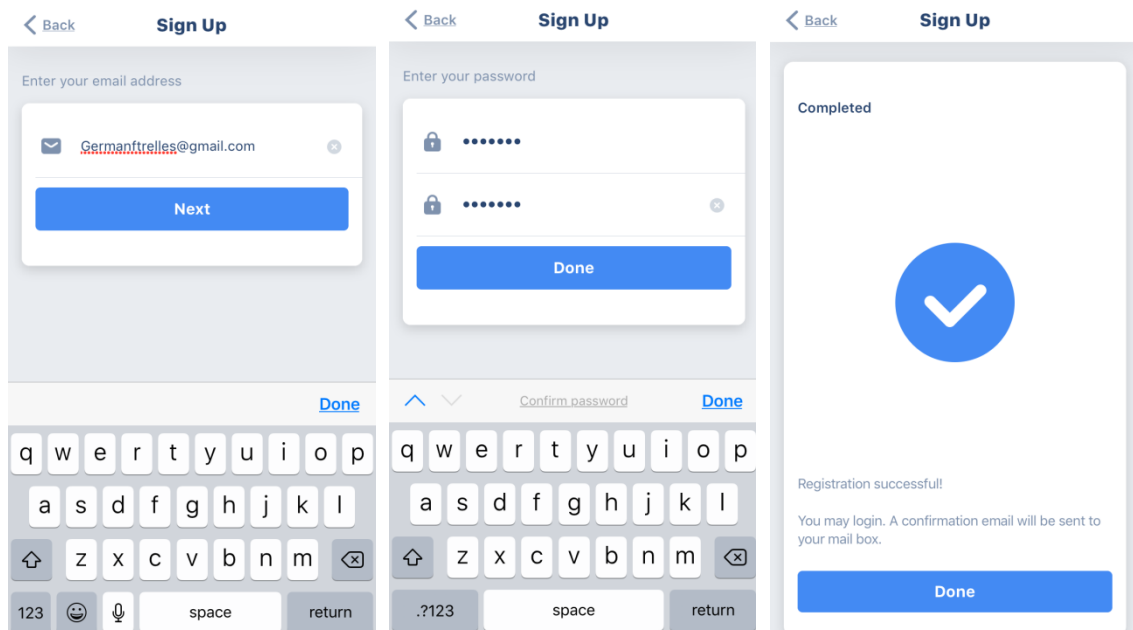


SmartLink Set Up and Connector+ App Configuration

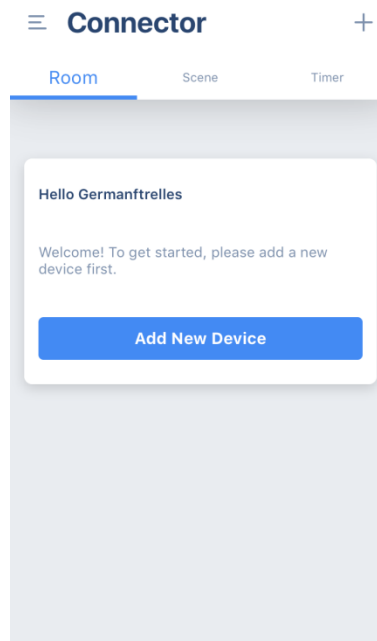
1. Plug the USB bridge into a power socket, if possible within close proximity to the WiFi router
2. Install the Connector+ app by either scanning the QR code on the instruction manual or by searching Connector+ in the app store. The app may also be called Connector without the “+”



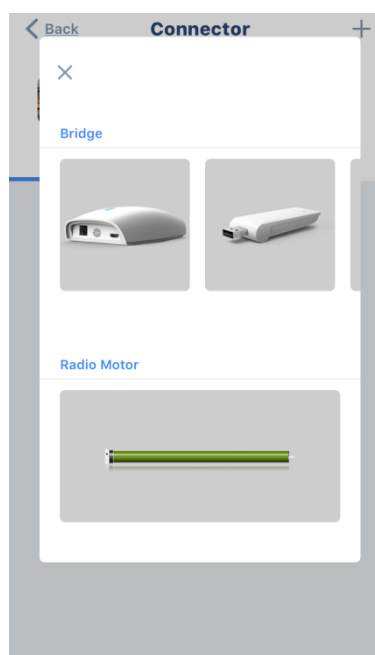
3. Select ‘Sign Up’ and enter your email plus a password. You will see a screen advising that you will receive a confirmation email. You do not need to wait for this email in order to move on with the set up



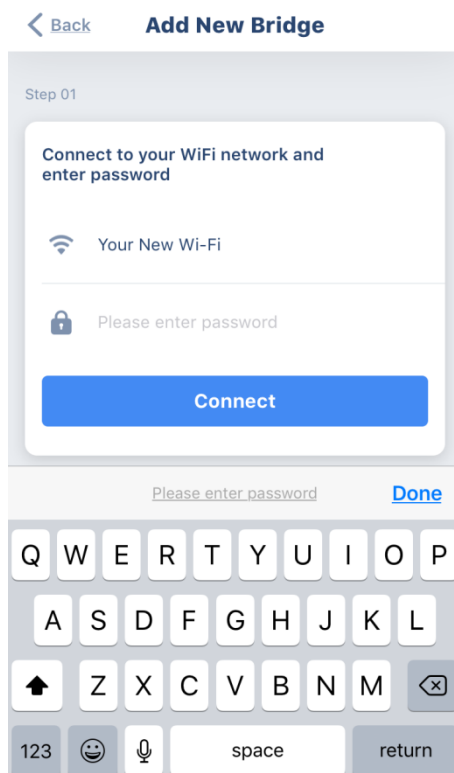
4. Sign in and you will enter the Connector home screen



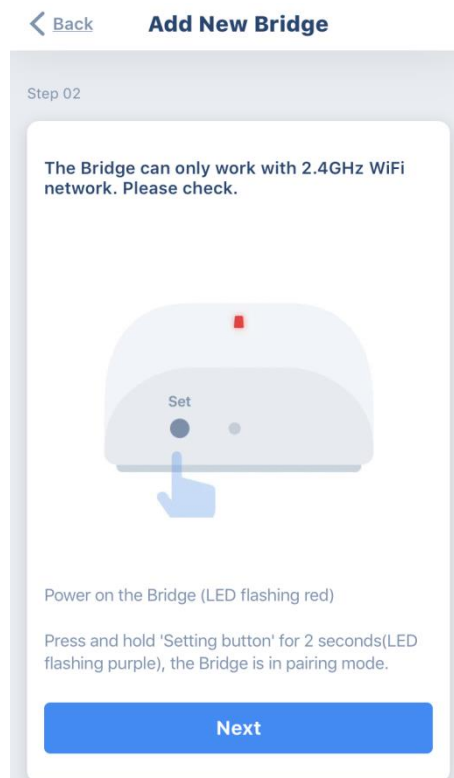
5. Select “Add New Device” and click on the image of the SmartLink USB bridge (top right image)



6. Select the WiFi network you wish to use. You will be asked to enter your WiFi password and then you will see the below screen in order to connect to the USB bridge . Select the blue “Connect” button

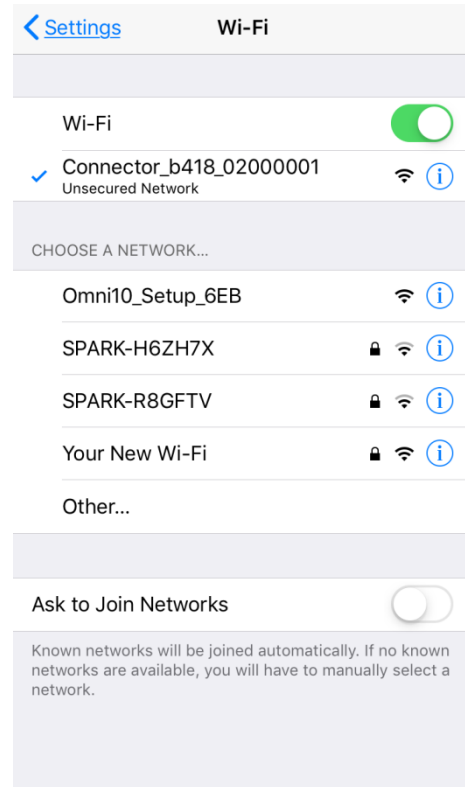
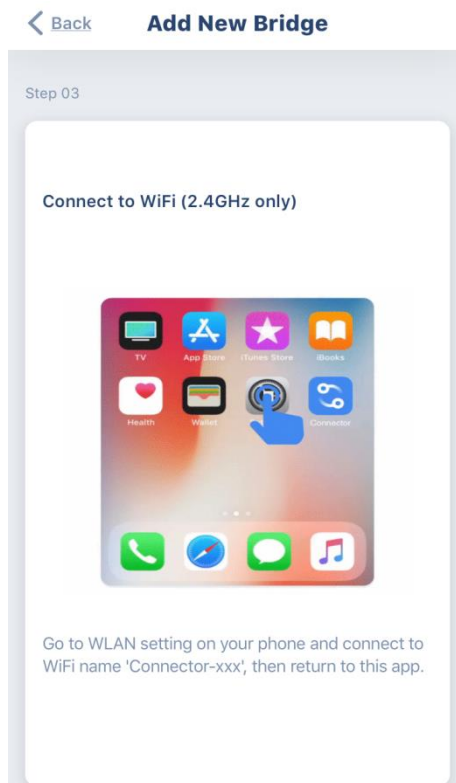


7. Press the black Set button on top of the USB bridge and hold for 2-3 seconds or until the light on the top of the bridge flashes red and then purple

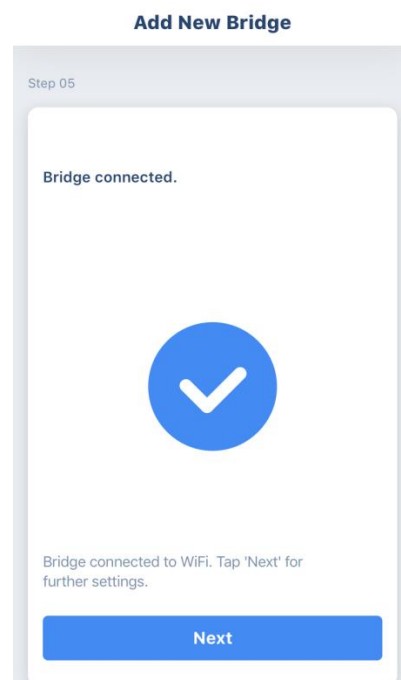
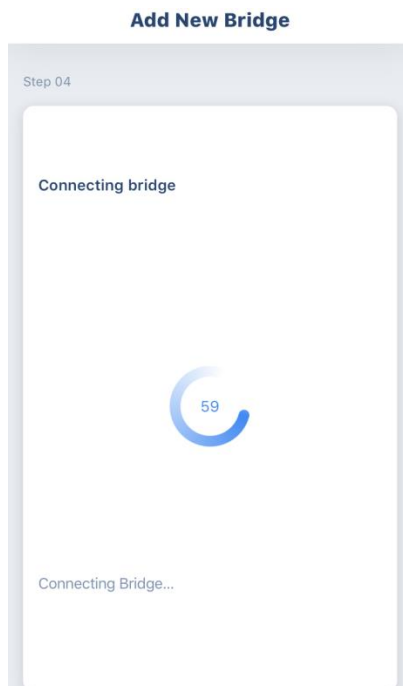


8. When it is flashing purple, press “Next”

9. The app will ask you to go your WiFi list on your phone (in Settings) and connect to the network named “Connector” followed by some numbers; select this “Connector” network

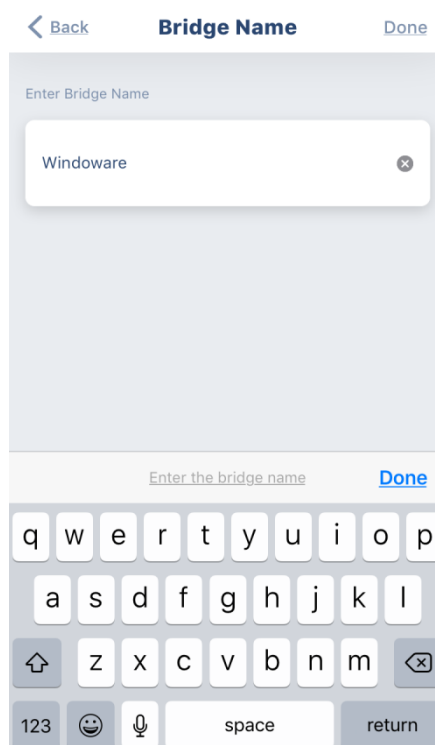


10. Return to the Connector+ mobile app and it should say “Connecting Bridge”, which could take 1- 2 minutes and a countdown to 0 will be displayed. At this time the light on the USB bridge will flash purple, green and finally blue

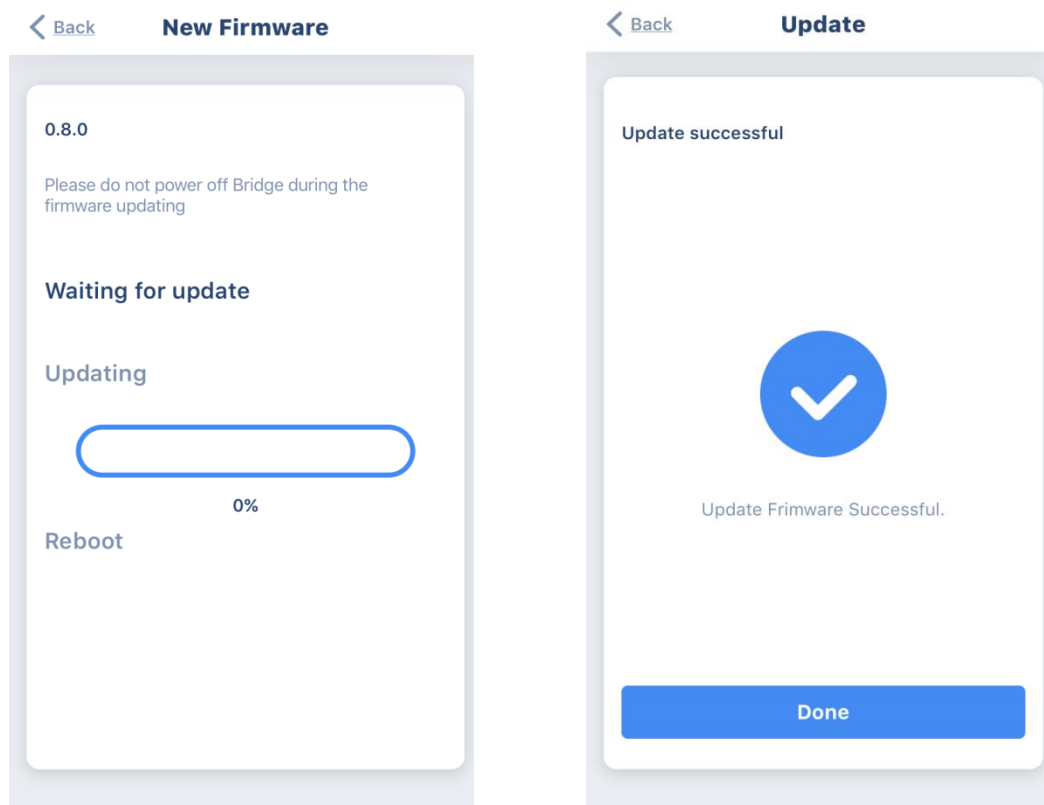


11. Once the USB bridge is connected the light on the top of the bridge will be solid blue

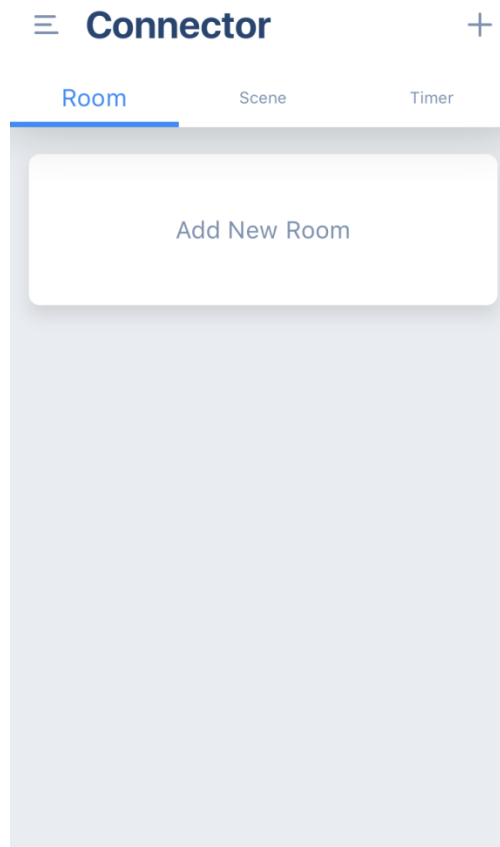
12. Create a name for your bridge and select “Done” in the top right corner to bring you back to main screen



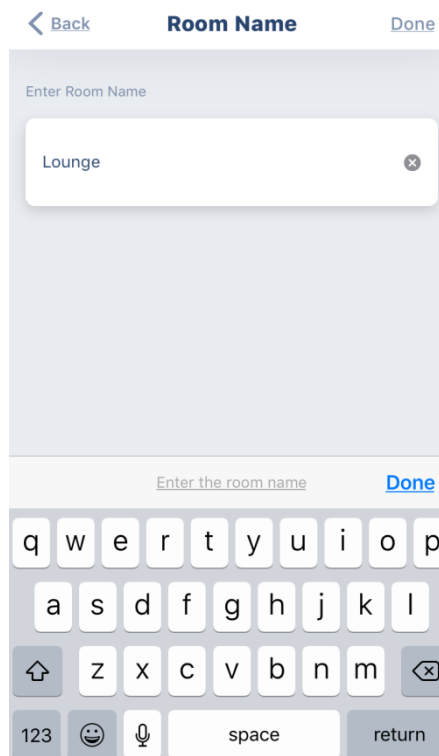
13. At this point there may be a request to update. If so, select yes to update Firmware, this may take a minute or two



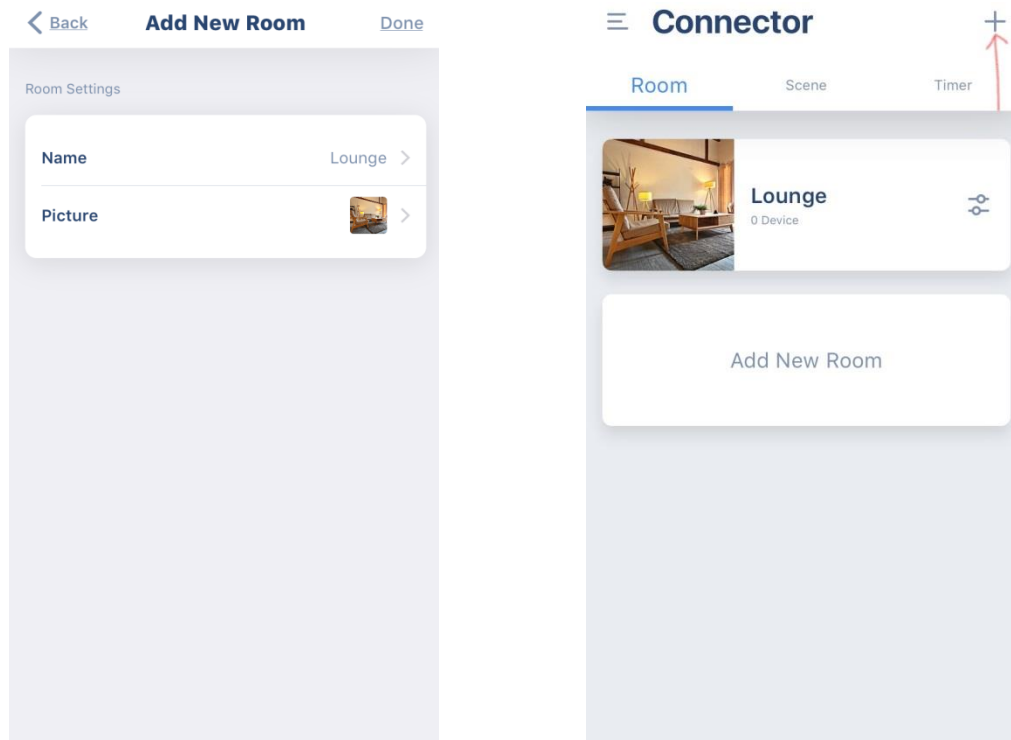
14. Once the update has completed, press “Done” to return to main screen. You will see “Room”, “Scene” and “Time” at the top. The main body of the screen will show “Add New Room”. Select “Add New Room”



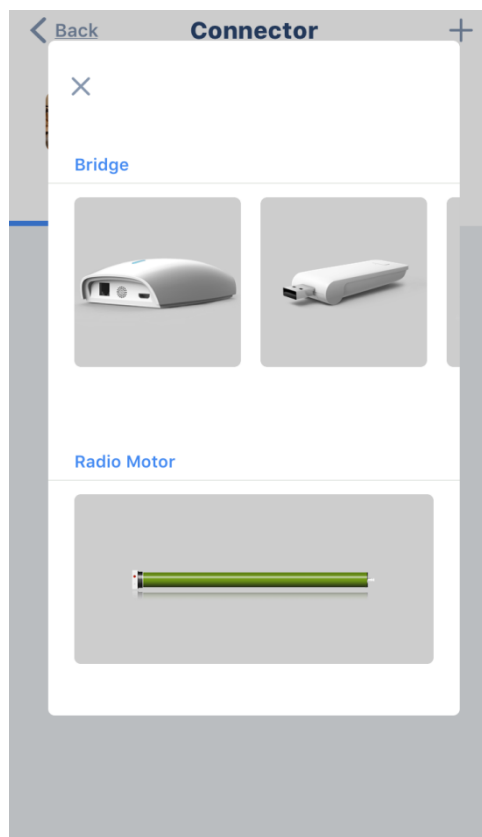
15. Name your room, then select “Done” in blue text and then “Done” in the top right corner to return to home screen



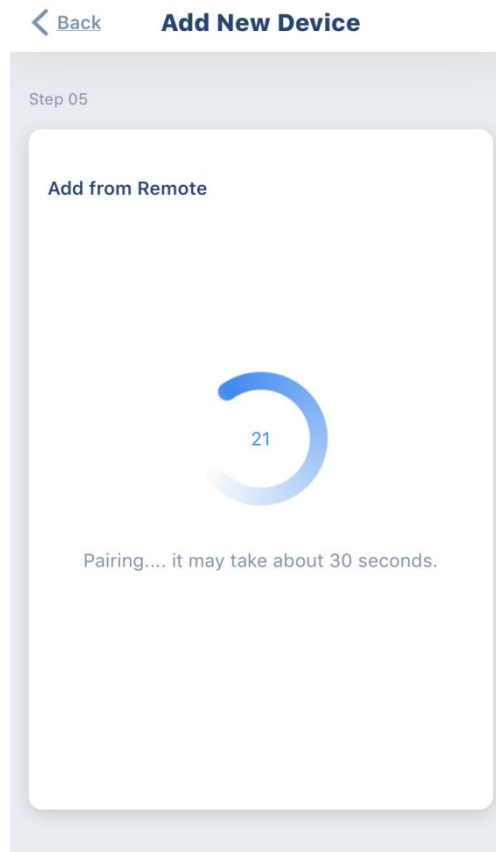
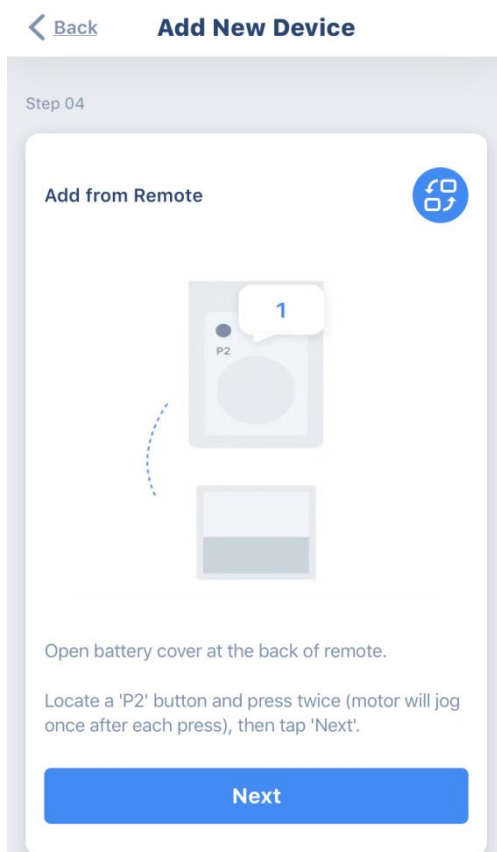
16. On your home screen you will now see your new recently added room. Click on this and tap the “+” icon in the top right of the screen



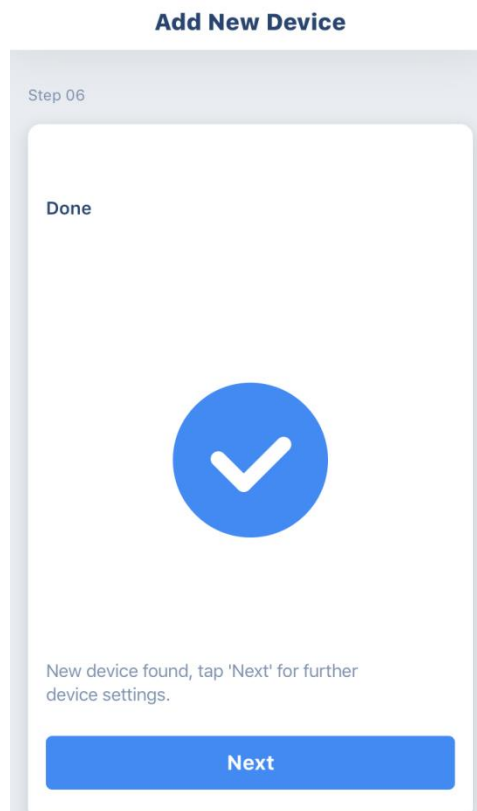
17. Select to add “Radio Motor”



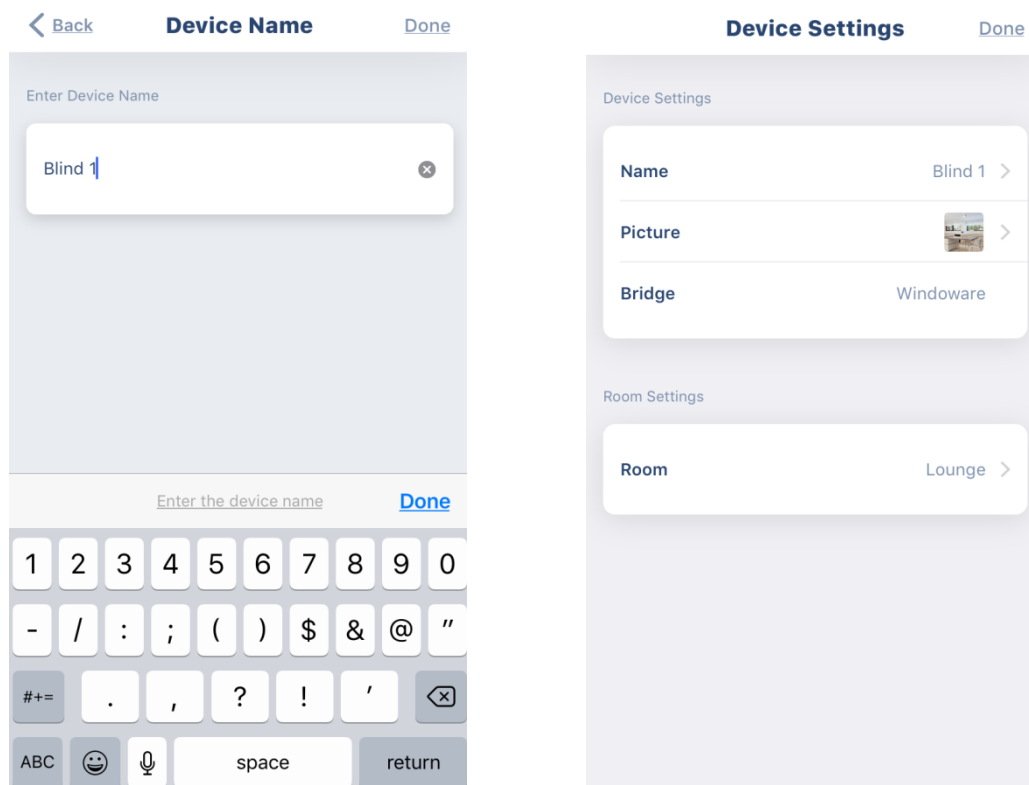
20. Follow the instructions on the screen. Locate and press P2 (on the back of the remote) twice, with a short space between the presses; the motor will jog up and down each time you press. Then press “Next”. The blind is now pairing from the remote. There will be a 30 second countdown on screen



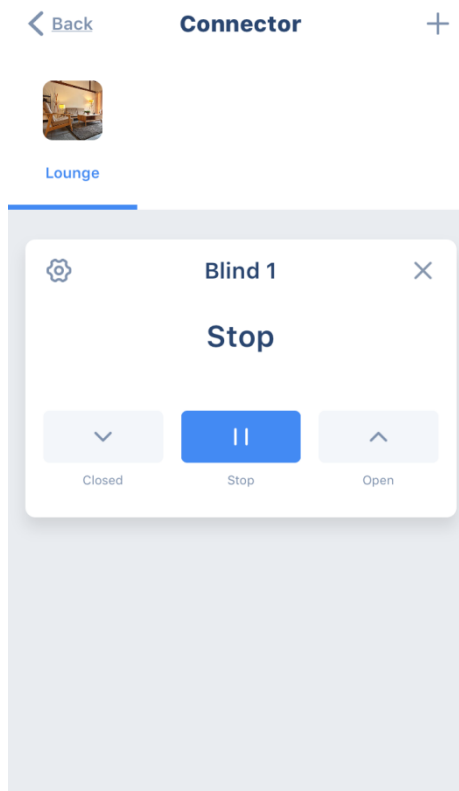
21. Continue to follow the instructions by pressing “Next” and then hold down the Stop/Central button on the remote, for at least 3 seconds. There will be another 30 second countdown on screen. Once paired the screen will show “New Device Found”, select “Next”



22. Name the device. Press “Done” in blue letters and then “Done” in the top right corner to return to the home screen



23. You have now paired your app with the blind. In the home screen press the name of the blind to test the operation



You can now use both the Connector+ app and the original remote to operate the blind

To add additional rooms return to step 17 and repeat all steps

To add multiple blinds within the same room, return to step 18 and repeat all steps